



South Wirdleonia: Way Down South

A massive fundraising effort will stretch the Schulminion globe yet again. For over 2 centuries, Schulmanidad was as far south as anyone ever went – and had ever thought about. But, the need for more raw materials and the need for more feline hunting grounds and agriculture, pushed the boundaries yet farther out. The Wirdleonia Exploration Council sold millions of schulmonetas worth of bonds to finance exploration, mineral extraction, and accelerate development in the Plains of Wirdleonia. The base of operations for staging this coordinated exploration and development team is Schulmanidad, whose growth presses right up to the edge of the district. Supplies for a massive expedition have been gathered. Logistics have been dealt with by a team from the City Planning Office, whose head, B. B. Bower, will accompany one of the three prongs of the exploration teams. The Black Cat Division (headed by B. B. Bower) will head southwest from Schulmanidad. The Tabby Division (led by will proceed due south and the Calico Corps (headed by Princess Katherine) will head southeast. As the teams fan out, researchers will catalog the plant and animal life, note natural resources, and map the terrain. Provisions for the three teams, with over 600 members in each, have been stockpiled in Schulmanidad.

The first priority for the three prongs is to cross the border and establish a base of operations south of Schulmanidad. The crossing point will be at the North Coast Highway, Schulmanidad's connection to the port.

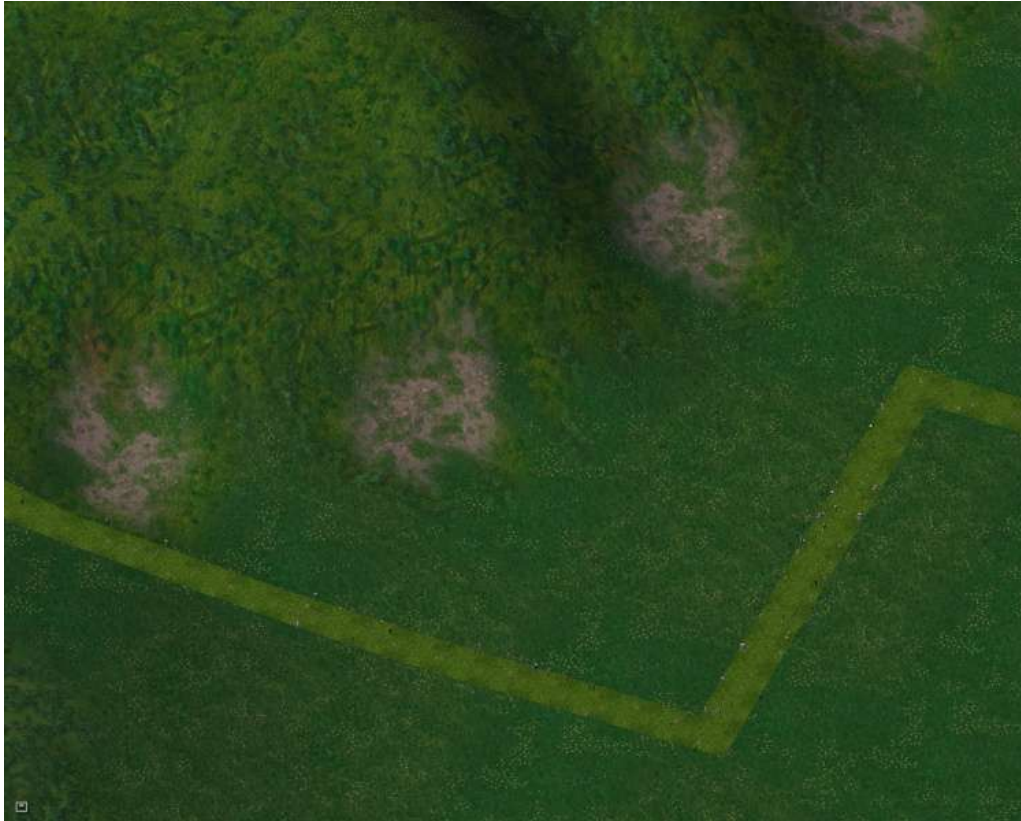


The City Planning Office already has anticipated spillover from Schulmanidad and will plan for a new town across the border to serve as homes for Schulmanidadenses as well as a portal for exploration and development to all points south.

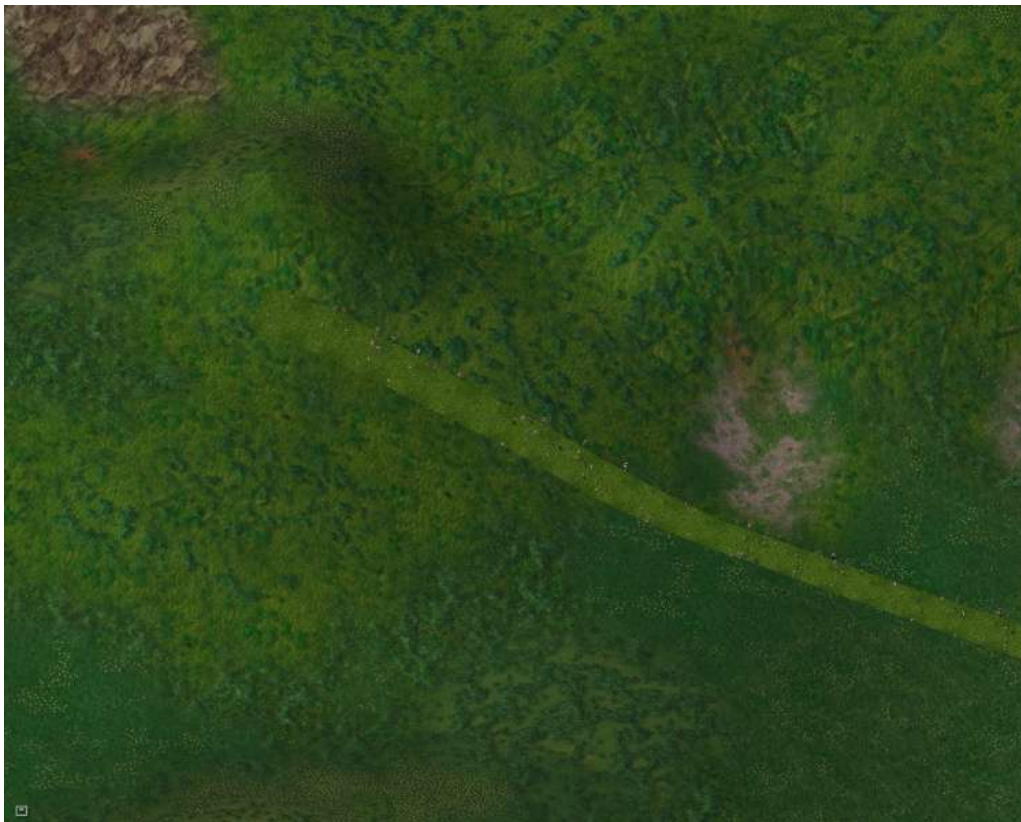
We will now follow each division as they scout out the unknown along the Plains of Wirdleonia.

TEAM 1: SOUTHWEST – BLACK CAT DIVISION

The team heads west and south, toward the hills in the distance. Some hills south and west of Schulmanidad have been rich in useful minerals. It is anticipated that these hills may continue that abundance. The research team includes 3 geologists and 2 mineralogists. Initially, the team skirted the mountains, heading west and south. Small scout teams were sent into the hills to reconnoiter and study the terrain.

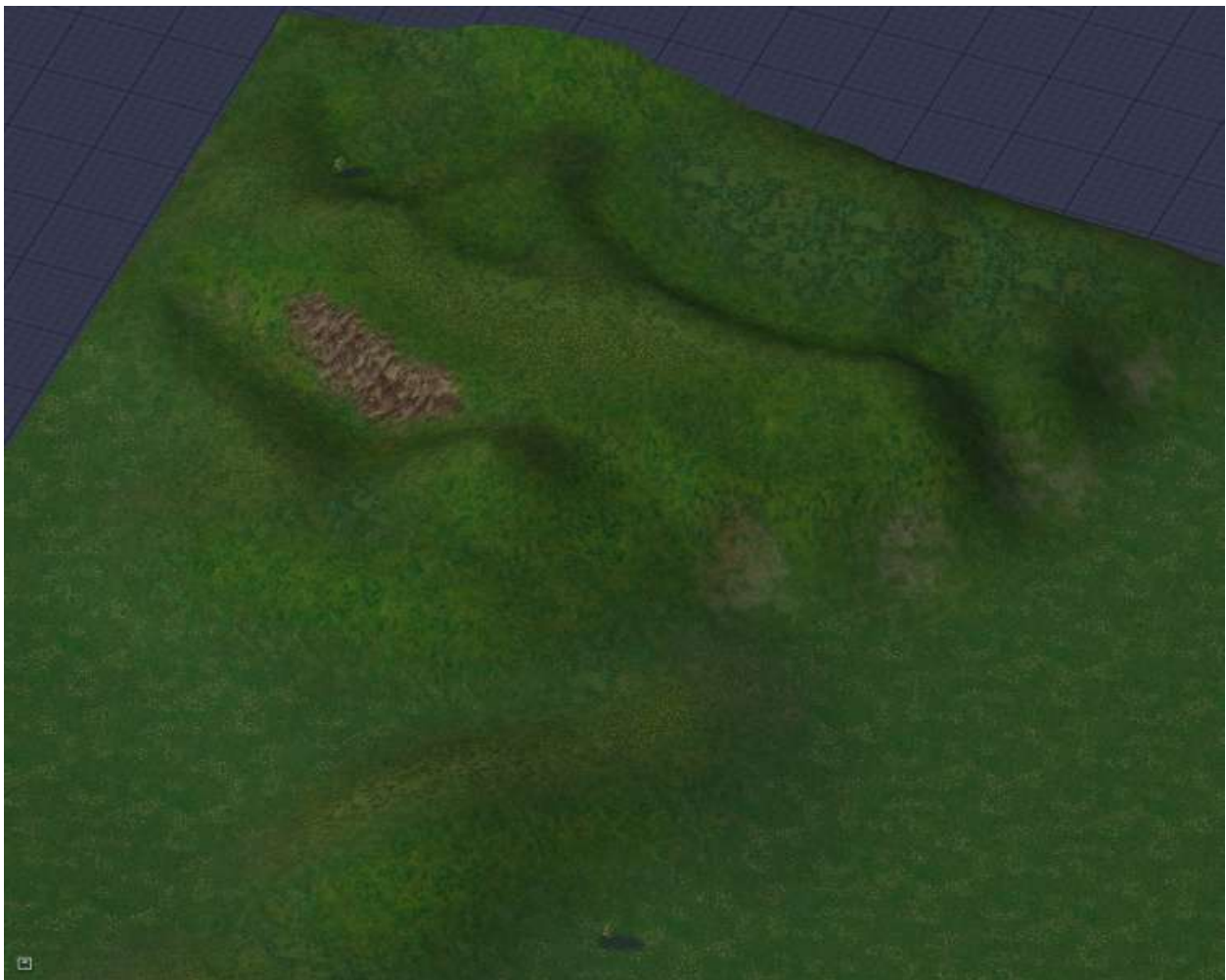


Following the contours of the land, the Black Cat Division continues the exploration



The expedition heads into the hills and sees that the land continues far off into the distance – farther than they are prepared to explore... for now.

The cartographers report the land is generally hilly only in the northwestern area of the plains. Biologists and ecologists report a rich ecosystem of grasslands and small animals. There were three observations of a mysterious long-necked animal, but no one got close enough to get a good look at it. Friendly relations were established with a group of felines living in the hills. They call themselves “Panthers” and eagerly swore allegiance to the Supreme Wurdle and were delighted to help the expedition prepare its report and welcomed the prospect of new towns coming to their area. Their recommendation was to head further south, where the hills have abundant springs. The group was able to produce this map of their sector of the plains.



TEAM 2: SOUTH – TABBY DIVISION

This group followed the line of the North Coast Highway south into the plains and continued in that direction, occasionally fanning out across the nearly featureless plains to record observations and chart the territory. This group was amazed at the very flat and nearly treeless grasslands they

encountered. There was an abundance of small game, ideal for the felines heading up the expedition. There were several sightings again of a strange, long-necked animal, but they were quite fleet and no one got close enough to them to analyze them in detail. Some native felines were encountered, all of whom were thrilled to meet their cousins and looked forward to new towns coming to the area.



Due south from Schulmanidad

Some large hills were visible on the horizon to the west as they trekked. The group split up to explore. What they found was a large mountain and several smaller hills.



The smaller hills

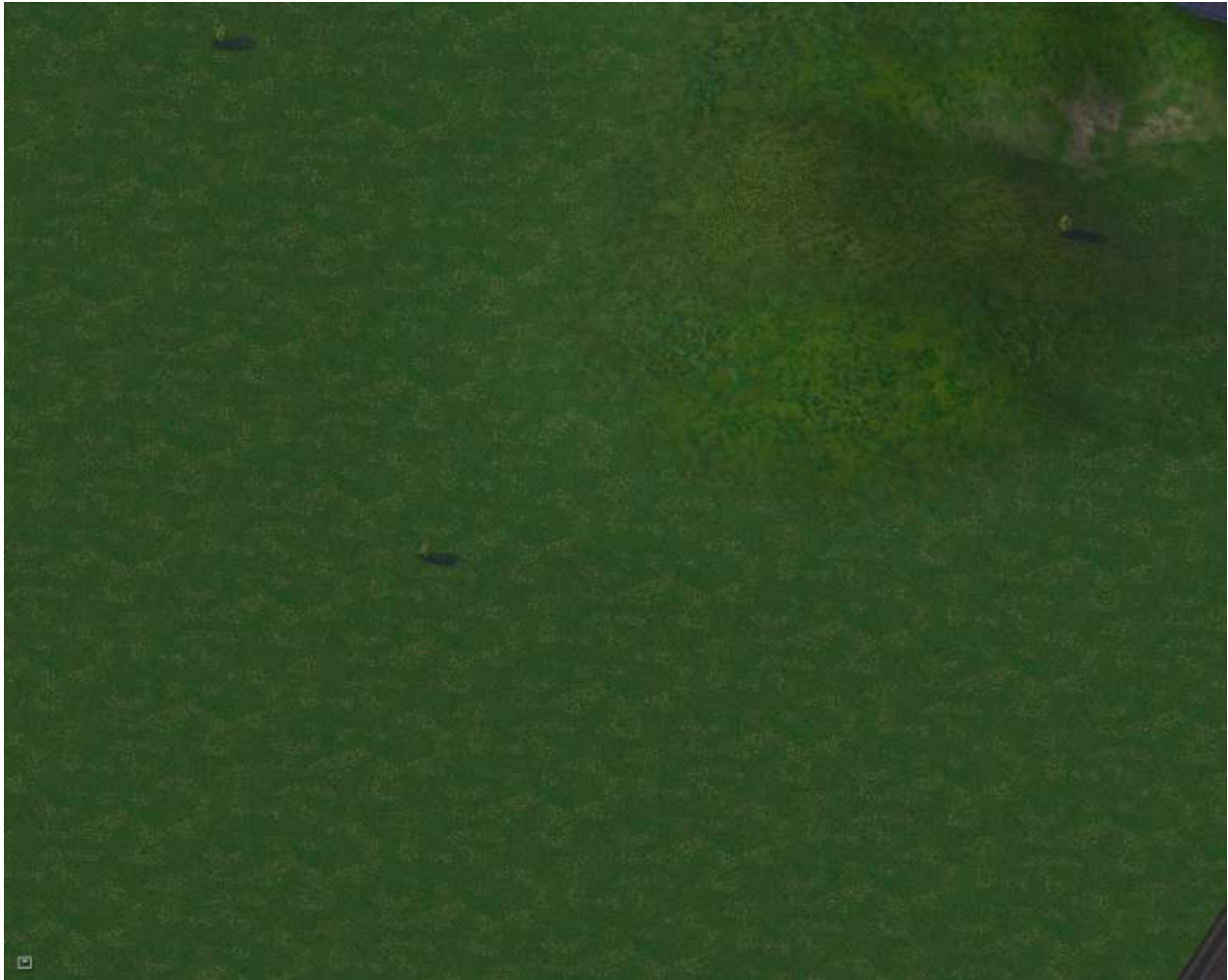


The large mountain at the southern terminus of the expedition route.

Expedition members were pleased to see that the mountain hosted several small and powerful springs, which proved to be the only water source in the area. The land, even on the mountain, seemed quite fertile.

TEAM 3: SOUTHEAST – CALICO CORPS

This group headed east. The expedition saw a few hills in the distance to the east, but mainly stayed in featureless plains. The grasslands were similar to what was experienced by the Tabby Division. Again, some sightings of long-necked animals were recorded, but they were too far off to observe clearly.



A small hill – one of the few landforms encountered. Cartographers estimate this particular hill to be more or less due south of Babalonia.



Most of the land observed was like this – flat and grassy

The expedition left behind forward bases and established supply lines. This planning would allow for rapid colonization of the area, officially referred to now as The Colony of South Wirdleonia. Below is a map showing the routes of the three prongs of this historic expedition. Thanks to unprecedented levels of financial support, this expedition covered far larger territory at much greater speed than any other exploration effort to date.

